

Luminaire Schedule						
Symbol	Qty	Label	Description	Arrangement	Lumens	LLF
☼	56	400 W Metal Halide		SINGLE	36000	0.616

Calculation Summary							
Label	CalcType	Units	Avg	Max	Min	Avg/Min	Max/Min
Floor Calc Points	Illuminance	Lux	183.70	223	48	3.83	4.65
Rack West	Illuminance	Lux	161.37	176	135	1.20	1.30
Rack North	Illuminance	Lux	167.79	192	131	1.28	1.47

LPD Area Summary				
Label	Area	Total Watts	LPD	LPD Units
LPD Area	3367	25704	7.634	Watts/Sq.M.



Calculations Based on the Following Assumptions

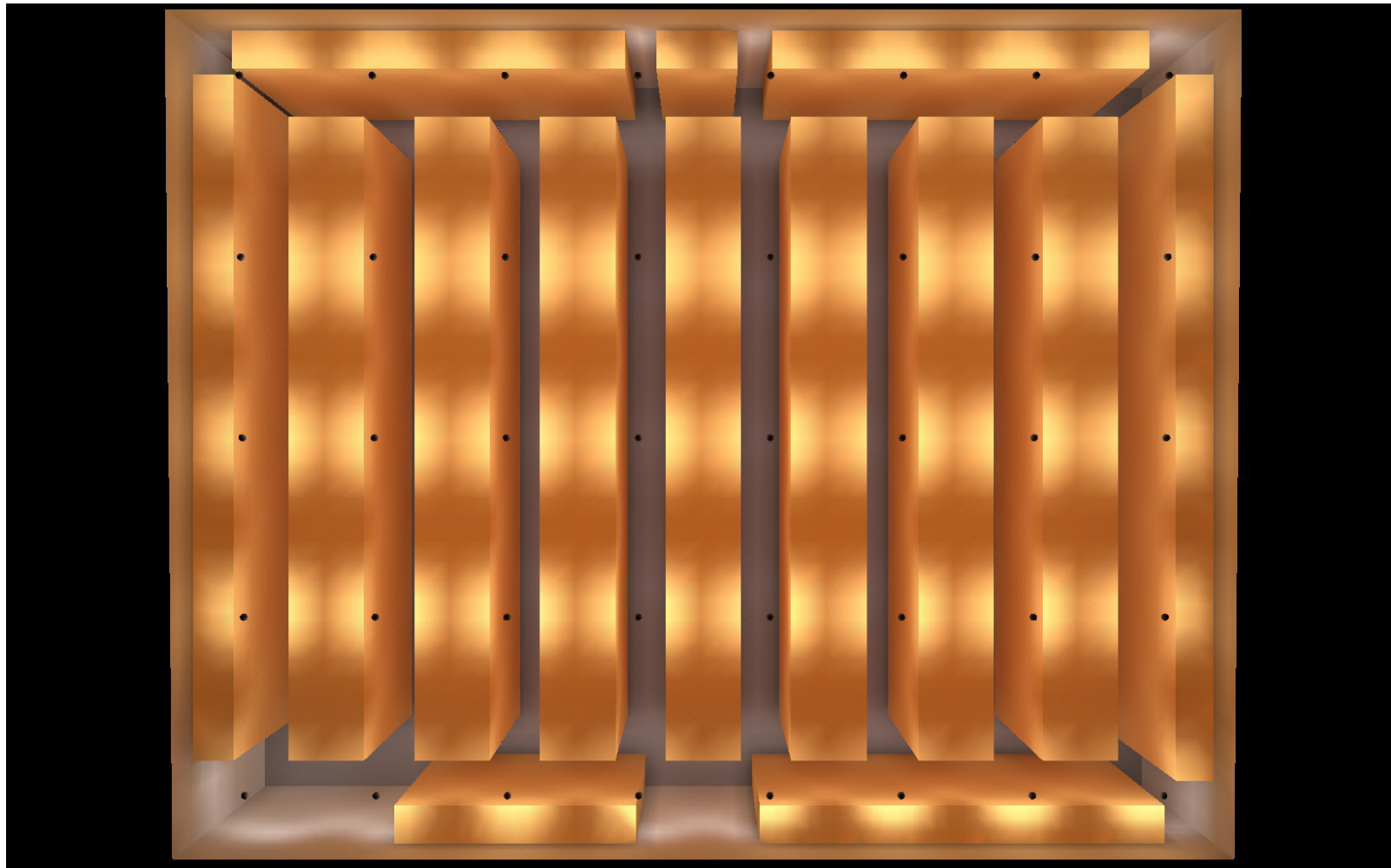
Environment: Cold storage facility
Operating Temp: -25° C
Dimensions: 65m x 58m x 13.6-14.4m (sloped ceiling)
Lighting Spec: 160 Lux 1m above floor, 80 Lux on bottom 3m of pallet rack face
Pallet Racks: drawn as solid objects to simulate full shelves, coloured brown to simulate cardboard boxes, 59% reflectivity
Ceiling Colour: off-white, 80% reflectivity
Wall Colour: off-white, 80% reflectivity
Floor Colour: grey concrete, 28% reflectivity

400W MH Lighting - Existing Cold Storage Case Study

Light Power Canada Inc.

1395 Charlotte Rd.
 North Vancouver, BC Canada V7J 1H1
 Tel.: (604) 998-0573
 Sales inquiries: mike.w@lightpowercanada.com
 Technical inquiries: andrew.irving@lightpowercanada.com





Overhead view of 65m x 58m x 13.5-14.6m freezer compartment with pallet racks represented as solid objects to simulate full shelves and luminaires represented by black circles.

400W MH Lighting - Existing
Cold Storage Case Study

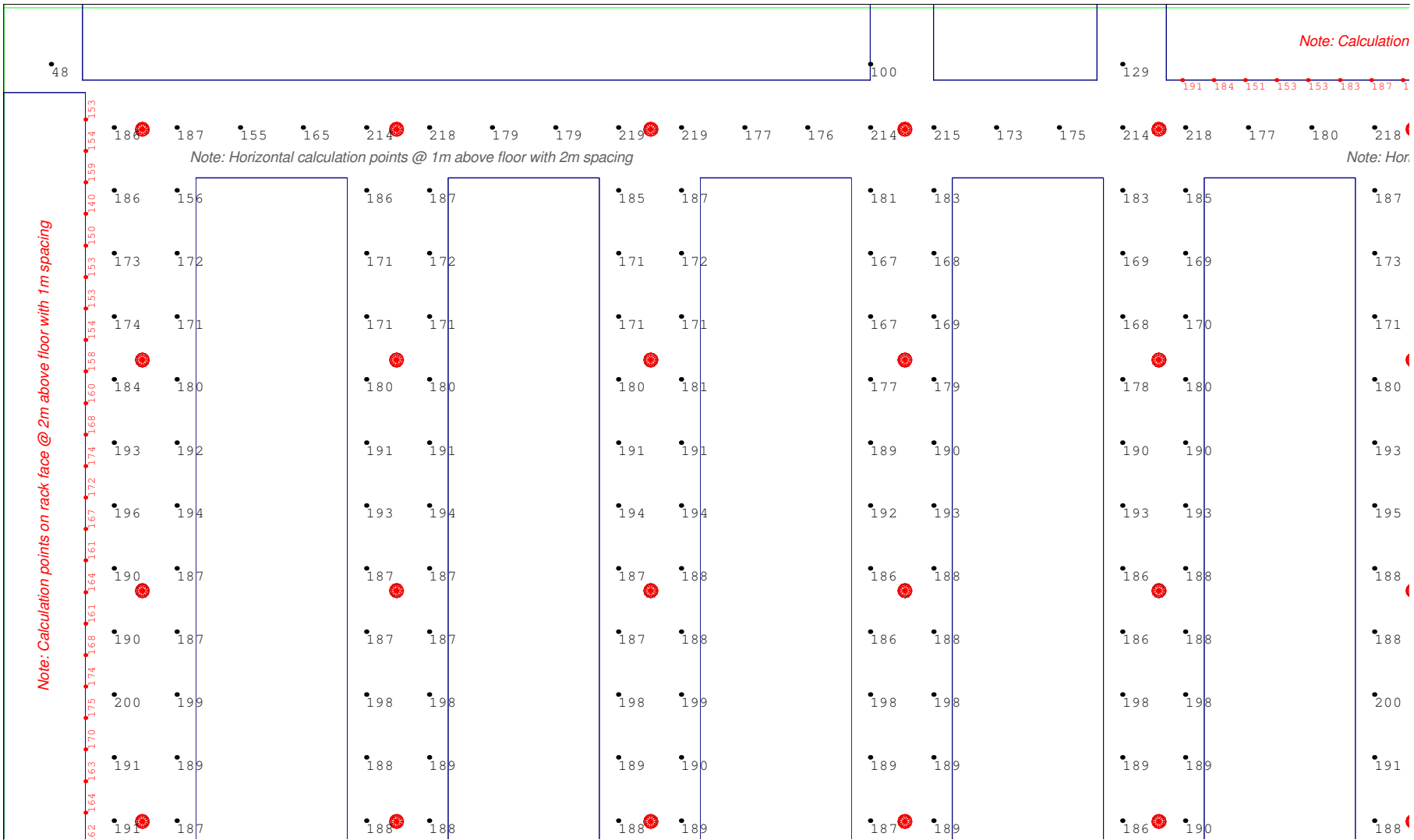
Light Power Canada Inc.

1395 Charlotte Rd.
North Vancouver, BC Canada V7J 1H1
Tel.: (604) 998-0573

Sales inquiries: mike.w@lightpowercanada.com
Technical inquiries: andrew.irving@lightpowercanada.com



Note: Calculation

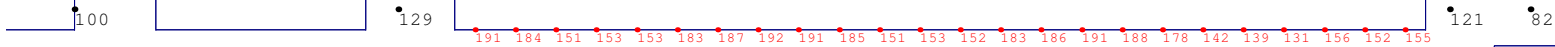


View of point by point Lux levels - NW quadrant

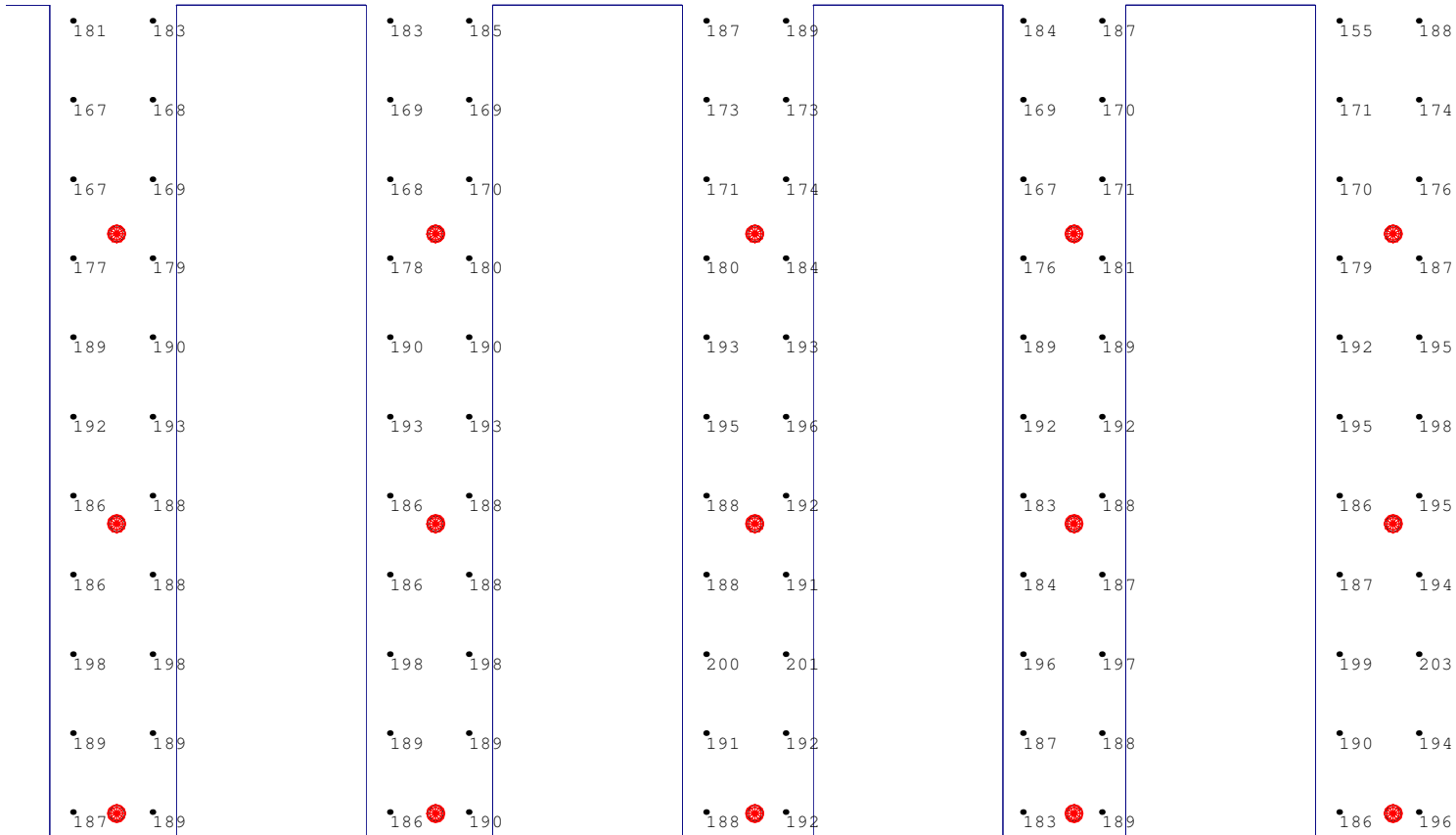
<p>400W MH Lighting - Existing</p> <p>Cold Storage Case Study</p>	<p>Light Power Canada Inc.</p> <p>1395 Charlotte Rd. North Vancouver, BC Canada V7J 1H1 Tel.: (604) 998-0573</p> <p>Sales inquiries: mike.w@lightpowercanada.com Technical inquiries: andrew.irving@lightpowercanada.com</p>
---	---



Note: Calculation points on rack face @ 2m above floor with 1m spacing



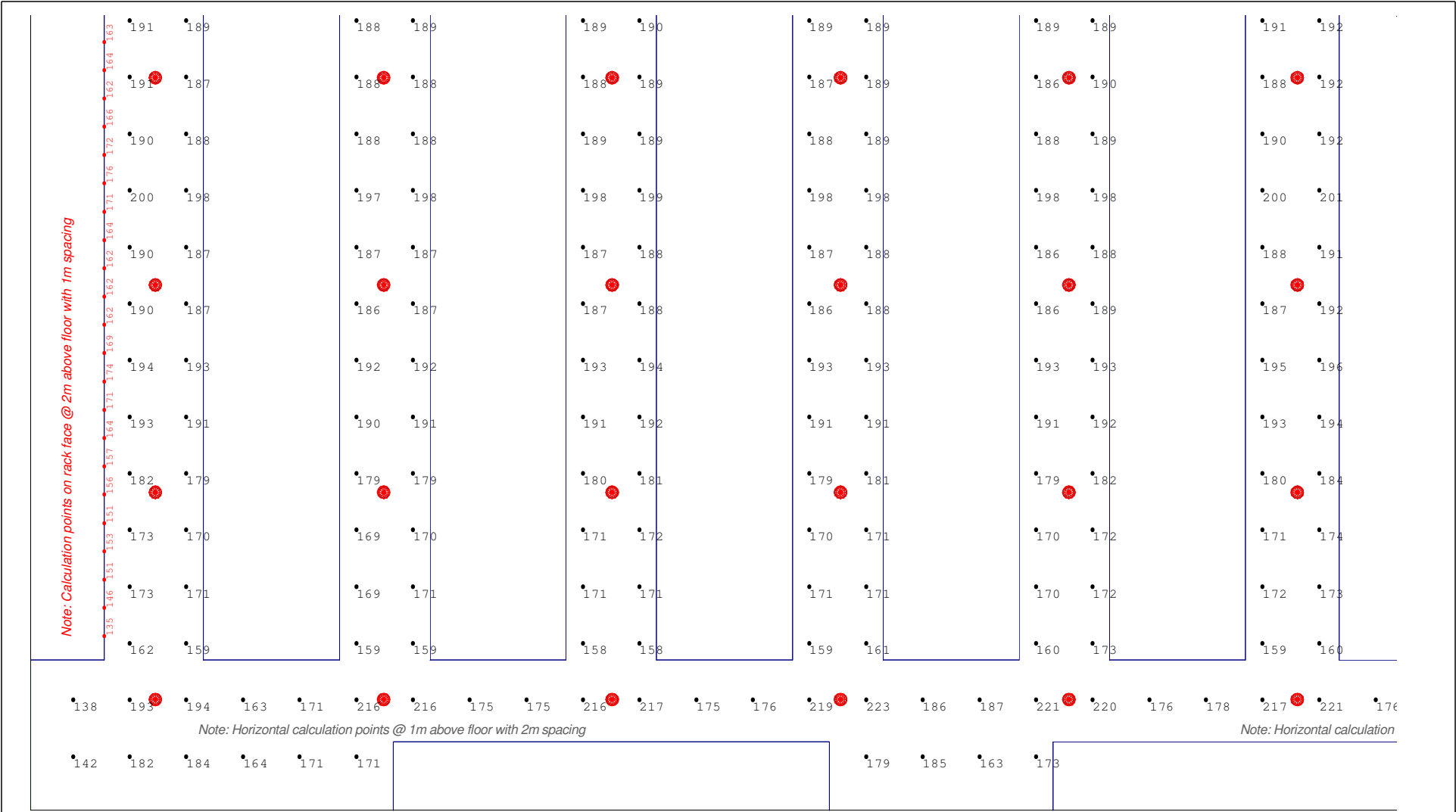
Note: Horizontal calculation points @ 1m above floor with 2m spacing



View of point by point Lux levels - NE quadrant

<p>400W MH Lighting - Existing</p> <p>Cold Storage Case Study</p>	<p>Light Power Canada Inc.</p> <p>1395 Charlotte Rd. North Vancouver, BC Canada V7J 1H1 Tel.: (604) 998-0573</p> <p>Sales inquiries: mike.w@lightpowercanada.com Technical inquiries: andrew.irving@lightpowercanada.com</p>
---	---

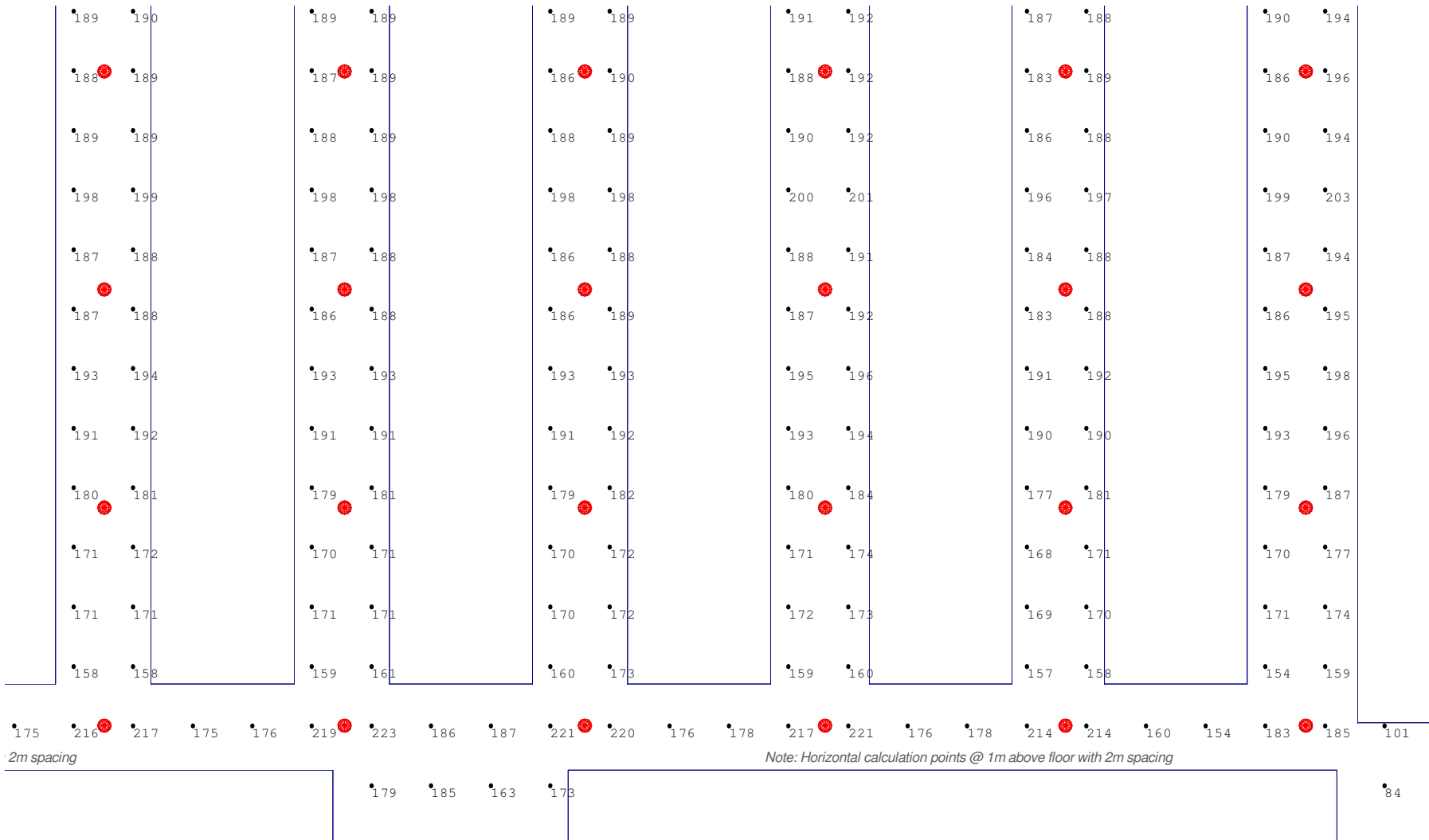




View of point by point Lux levels - SE quadrant

<p>400W MH Lighting - Existing</p> <p>Cold Storage Case Study</p>	<p>Light Power Canada Inc.</p> <p>1395 Charlotte Rd. North Vancouver, BC Canada V7J 1H1 Tel.: (604) 998-0573</p> <p>Sales inquiries: mike.w@lightpowercanada.com Technical inquiries: andrew.irving@lightpowercanada.com</p>
---	---





View of point by point Lux levels - SE quadrant

<p>400W MH Lighting - Existing</p> <p>Cold Storage Case Study</p>	<p>Light Power Canada Inc.</p> <p>1395 Charlotte Rd. North Vancouver, BC Canada V7J 1H1 Tel.: (604) 998-0573</p> <p>Sales inquiries: mike.w@lightpowercanada.com Technical inquiries: andrew.irving@lightpowercanada.com</p>
---	---

